

Macquarie Park

Contact Agent



206/ 1 Mooltan Avenue

One Bedroom Apartment in the heart of Macquarie Park

This near new 1 bedroom apartment is nestled in the 'MELBOURNE' Building of Macquarie Park Village, with stunning timber flooring throughout, quality stainless steel appliances and ducted a/c.

- Stylish gourmet kitchen with stainless appliances, stone bench top and gas cooking
- Miele appliances, incl: dishwasher, refrigerator, oven and stovetop
- Spacious and unique open-plan layouts
- Timber floorboards
- Built-in-wardrobes
- Internal laundry with Omega dryer
- Reverse cycle ducted air-conditioning
- Secure building with intercom access
- Total area: 75m², apartment area – 65m², storage cage – 10m²
- Moments to Macquarie Shopping Centre, University and Train Station

Strata \$660p/q – Council \$301p/q – Water \$172p/q



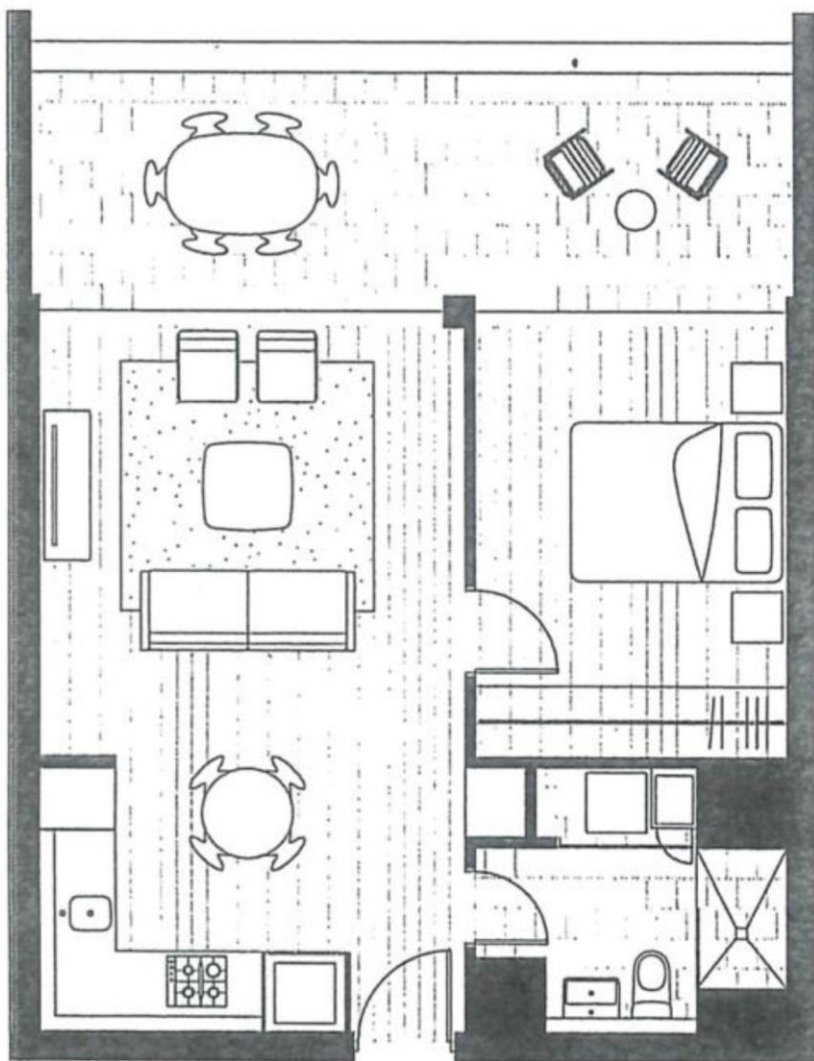
Michael Zhong

Sales Consultant
M: 0403 656 600

E: Michael_zhong@loyalproperty.com.au

The information and figures contained in this report have been compiled from information provided to us by the vendors and other responsible sources. We have not independently checked any of that information which we merely pass on. No warranty is given to their accuracy and all figures are subject to change without notice. Prospective purchasers must rely on their own enquiries.

206/1 Mooltan Avenue, Macquarie Park



Apartment Area: 65m²
Storage Area: 10m²

Total Are: 75m²

**Storage Cage
(10m²)**



地來
產澳

Loyal
Property Chatswood